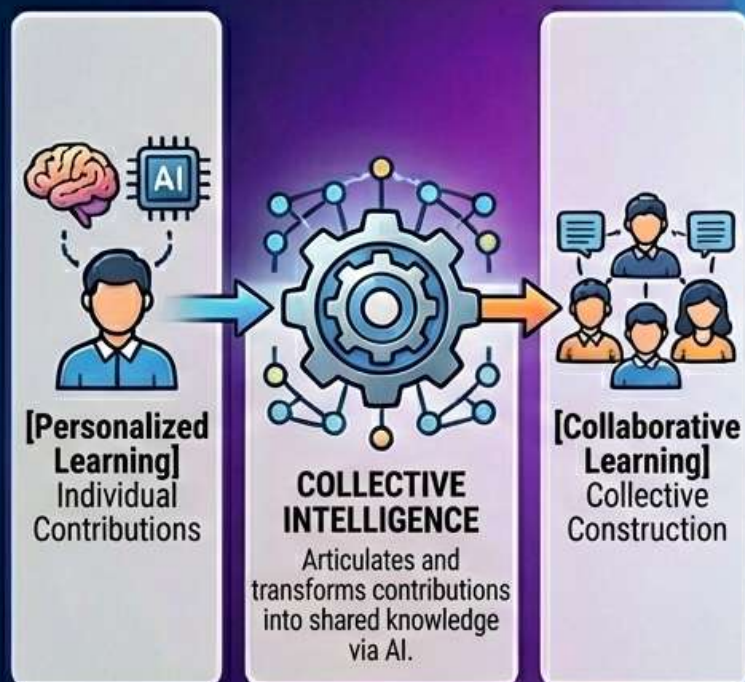


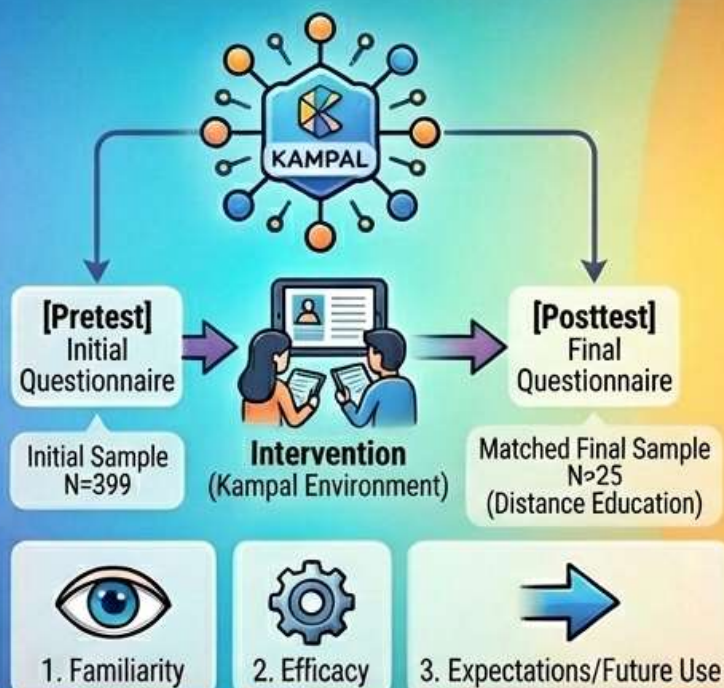
Artificial intelligence and collective intelligence in digital higher education: a quasi-experimental study using the Kampal platform.

Martínez-De la muela, A., Ruiz-Fuentes, J. P., & González-Geraldo, J. L. – RIED, 29(1)

THE CHALLENGE: INTEGRATING AI, PERSONALIZATION AND COLLABORATION




THE STUDY WITH THE KAMPAL PLATFORM



KEY RESULTS AND NEED FOR MEDIATION

 **Significant increase in:**
✓ **Familiarity** with the tool.
✓ **Future disposition** to use similar technologies.

 **No significant changes in:**
— Perception of **immediate efficacy**.
— **Expectations**.

 **Crucial finding: Need for INTENTIONAL TEACHING MEDIATION** to facilitate complex dynamics like **swarm intelligence**.

Properly supervised, AI enhances hybrid environments where collective intelligence operates as a nexus between personalization and collaboration, facilitating swarm intelligence.