

Development and validation of the AI-enhanced Self-Regulated Learning (AI-SRL) scale

Ayaz, M. A., Karataş, F., & Yüce, E. – RIED-29(1)

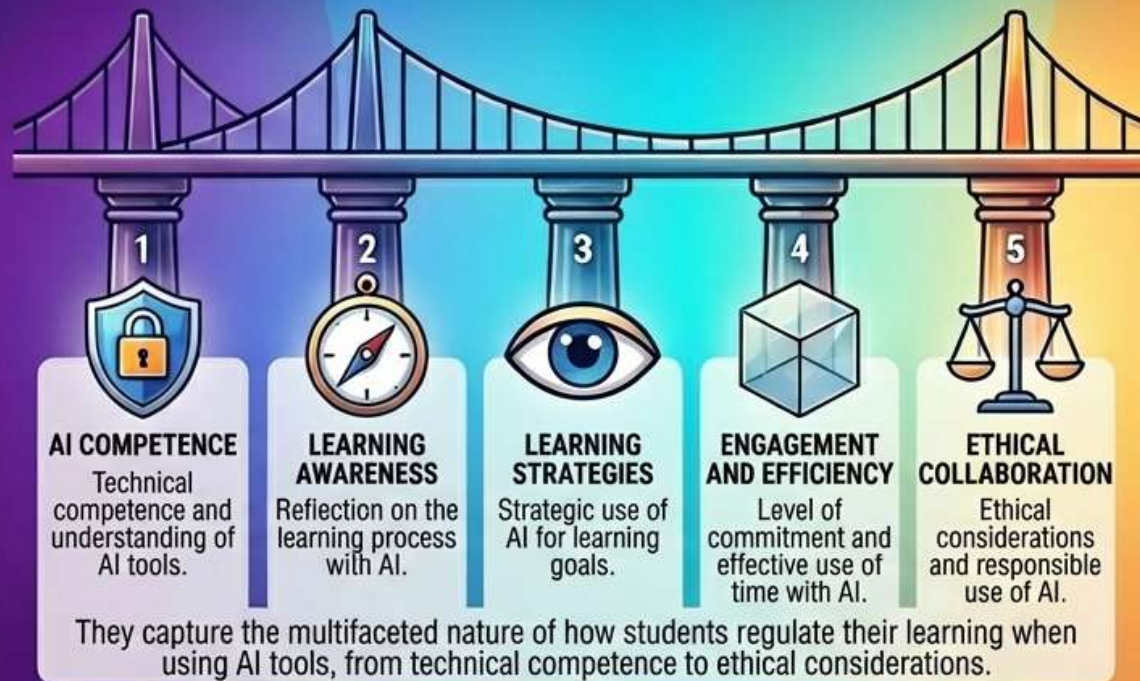
PERSPECTIVE: BETWEEN OPPORTUNITIES AND GAPS



The Current Problem

AI offers new opportunities to improve self-regulated learning (SRL). However, current tools lack precision to evaluate how AI influences students' self-regulatory capacities.

5 DIMENSIONS OF THE AI-SRL SCALE TO EVALUATE SELF-REGULATED LEARNING:



PRACTICAL EXEMPLIFICATION: THE AI-SRL INSTRUMENT



Instrument Validation

Rigorous process (literature review, expert consultation, systematic validation). Two-phase approach with separate samples for exploratory and confirmatory factor analyses. Final scale of 22 items.



Practical Applications

For educators (optimizing AI integration), researchers (studying AI and SRL), and institutions (developing AI-enhanced curricula). Solid psychometric properties.

The AI-SRL Scale provides a reliable framework to evaluate the extent to which students leverage AI tools while maintaining their self-regulatory capacities, thus contributing to a more effective and responsible implementation of AI.