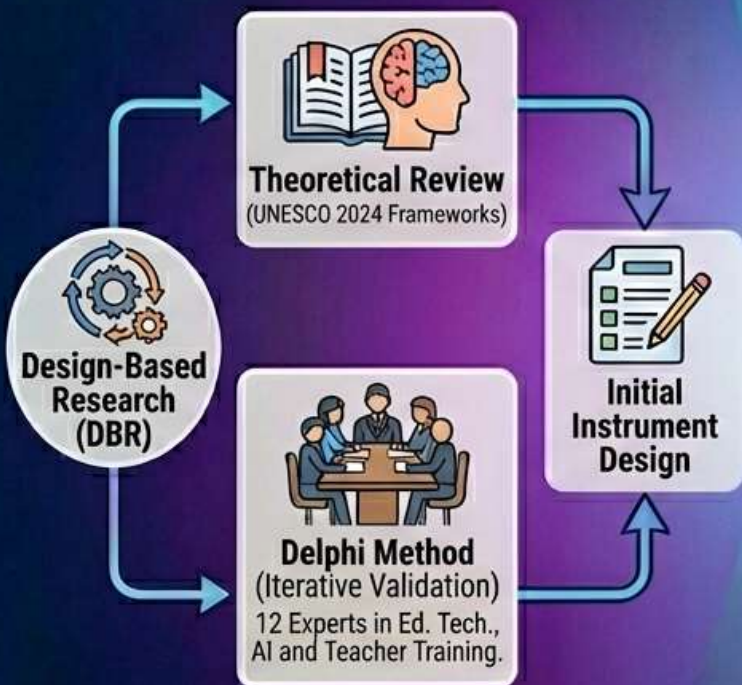


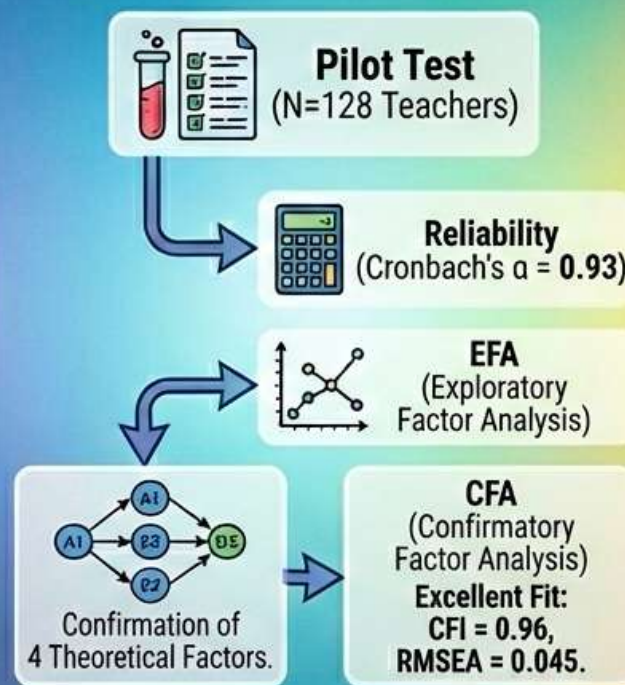
AI-ED-SAT: design and validation of a questionnaire for self-assessment of teaching skills in educational AI.

Sartor-Harada, A., & Azevedo-Gomes, J. – RIED, 29(1)

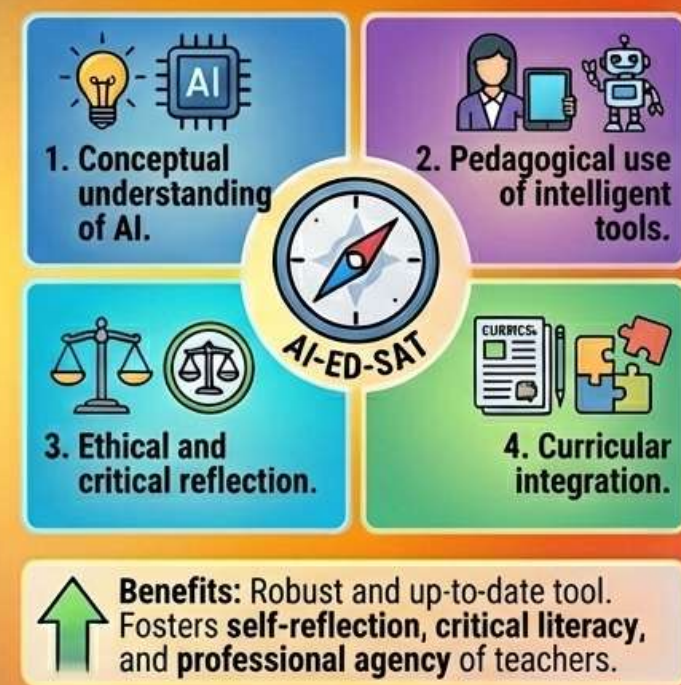
DESIGN AND METHODOLOGICAL APPROACH



PSYCHOMETRIC VALIDATION (Pilot Results)



FINAL INSTRUMENT: AI-ED-SAT (4 Dimensions)



The AI-ED-SAT is configured as a robust and up-to-date tool for research and training, strengthening teacher professional agency facing the challenges of AI.