

# Normative framework for ethical and trustworthy AI in higher education: state of the art

González Fernández, M. O., Romero-López, M. A., Sgreccia, N. F., & Latorre Medina, M. J. (2025). Normative framework for ethical and trustworthy AI in higher education: state of the art. *RIED-Revista Iberoamericana de Educación a Distancia*, 28(2). <https://doi.org/10.5944/ried.28.2.43511>

## AI Research

The use of artificial intelligence (AI) in higher education represents an emerging and continuously evolving field.



## Ethics and AI

Current research highlights the critical synergy required between ethics and appropriate use in the academic application of AI.



## Regulatory and ethical frameworks

Therefore, a documentary study is presented to investigate the regulatory and ethical frameworks of the use of AI in higher education institutions. A systematic literature review was conducted following the guidelines and procedures of the PRISMA model.



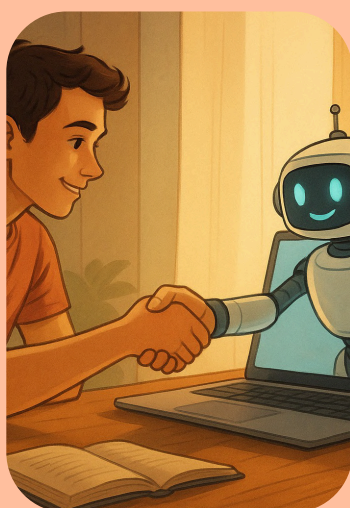
## The search

The information search was carried out in the databases of Scielo, Scopus, Redalyc, among others, which were subsequently exported to Mendeley and Rayyan platforms for analysis and categorization.



## Instruments and analysis

In the screening process, 28 articles were selected, classified into four categories: ethical challenges and risks, regulatory frameworks, ethical training and didactical models, utilizing the MAXQDA software.



## Results

Additionally, a bibliometric analysis (VOSviewer) was performed to identify major research trends in this domain. In general, the results show, on the one hand, the importance of generating specific policies and regulations that allow the appropriate use of AI in university contexts.



## Need for training

On the other hand, the need for training of the entire educational community involved incorporating its responsible use. The academic debate on how to balance technological innovation with ethics, inclusion, and sustainability remains an open and pressing challenge.

